

May 13, 2021

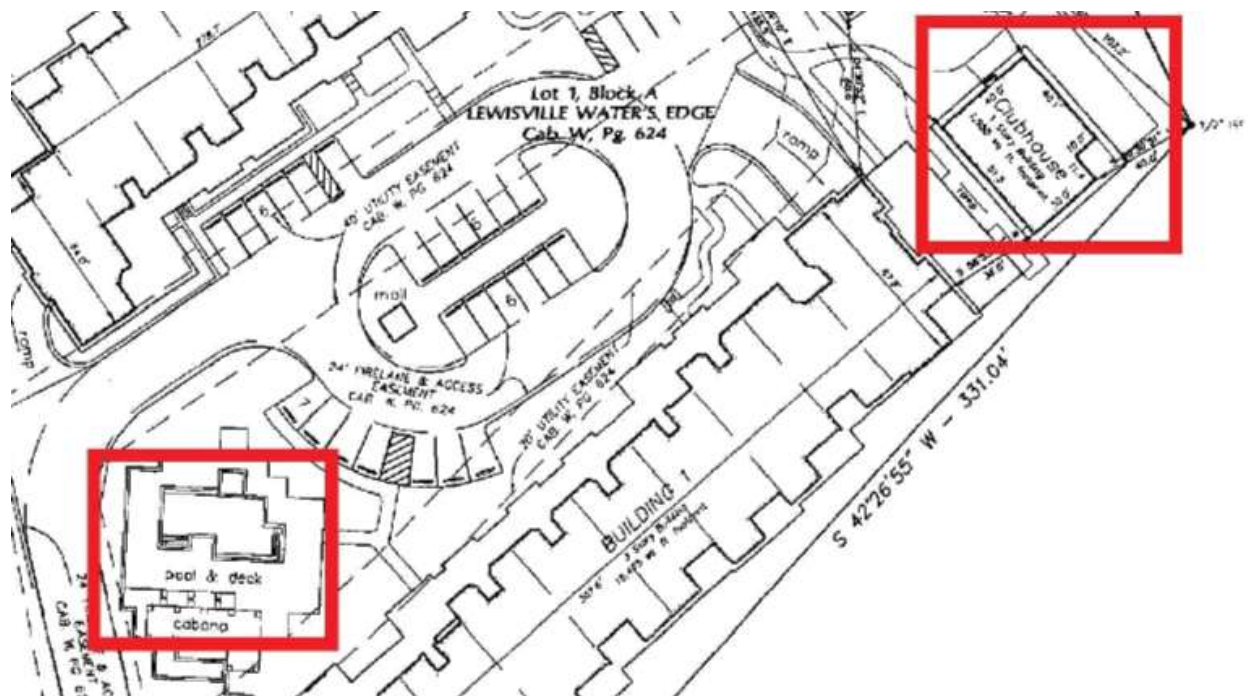
Dear Homeowners of Lewisville Waters Edge II,

Re: Trash Bin Update

We would like to welcome you to *Lewisville Waters Edge II*, a beautiful community in which to reside harmoniously with your neighbors. We would like to provide you with some information regarding the delivery of your new trash bins. We have spoken with Republic Waste Management Company, and the order for the trash bins is being processed and should be delivered in the next couple of days. The scheduled pick-up date of trash will be every Thursday. We would like to inform you that Lewisville Waters Edge II homeowners do not have access to using the trash dumpsters located at Lewisville Waters Edge I property.

We would also like to note to you, that Lewisville Waters Edge II has two Pet Waste Stations available in the community, for your pet's convenience. These will be the designated areas of use for your pets. Please refrain from walking and accessing Lewisville Waters Edge I for any pet necessity.

With this being said, please understand that you do have access to the Amenities Center (Please see diagram below). We thank you for your effort and in abiding to our Rules and Regulations.





We also encourage you to:

Please use our Web Submission Resource Tool- You can log into your Association's website at www.essexhoa.com. If you have not already registered to your Association's website, please consider doing so today. Once you are registered, you will have access to various resources and benefits such as; viewing your account, making payments, accessing community documents and you will be able to submit questions or concerns via our web submission tool and can reach all of our departments (Compliance, Maintenance, Billing, ACC, General Questions, etc.). We monitor on a daily basis for fast response and resolution.

Thank you

Sincerely,

Essex Association Management, LP
Managing Agent for *Lewisville Waters Edge II*.